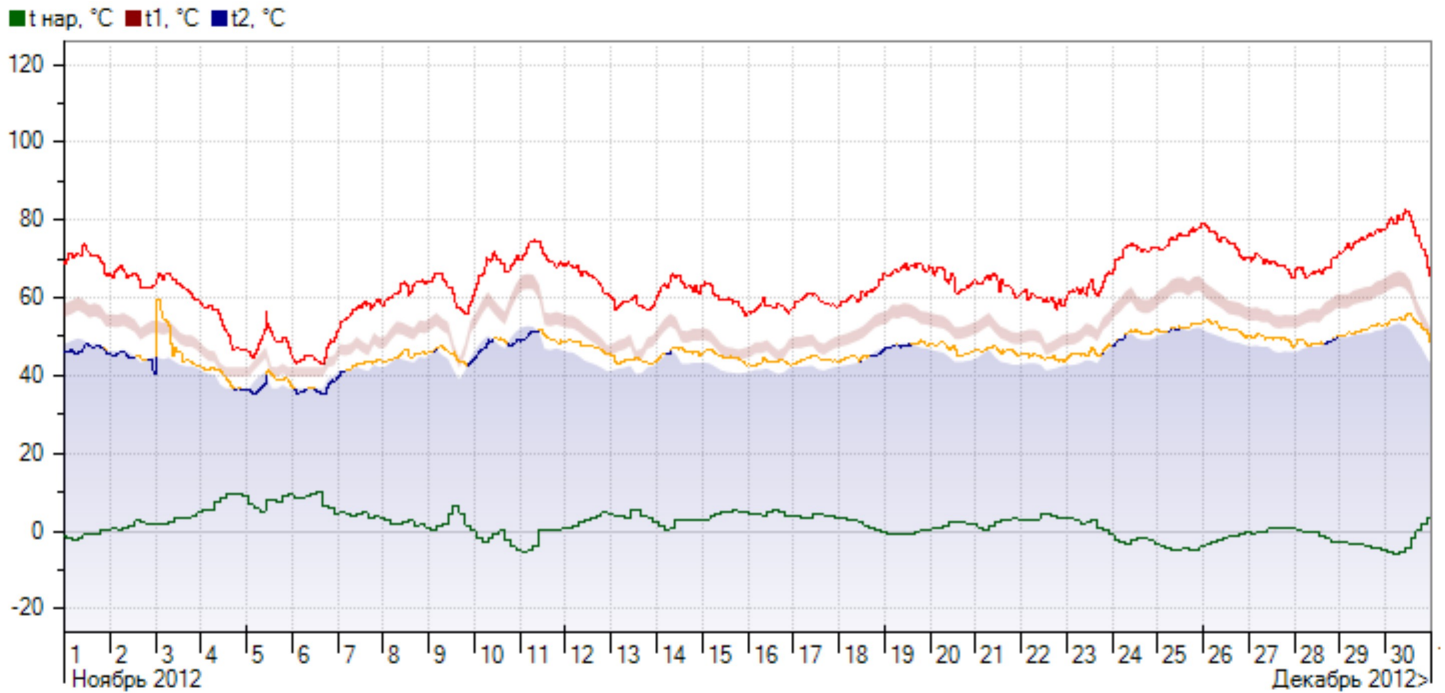


: Pmin= 0,05 Pmax= 1
 : 95/70 °C, ±3/+5 %
 : ()

01/11/2012 00:00 - 01/12/2012 00:00



01.11.2012 - 01.12.2012

720.0 0.0 29,70% t=10,89°C Q=12,99163
 571.0 0.0 11,04% t=2,85°C Q=3,23491

01.12.2012 - 01.01.2013

724.0 0.0 44,25% t=24,63°C Q=32,82115
 706.0 0.0 16,17% t=5,89°C Q=11,16593